

Ming Norman Tsui
9/16/2005
AE 481 W
Advisor: Dr. Moeck

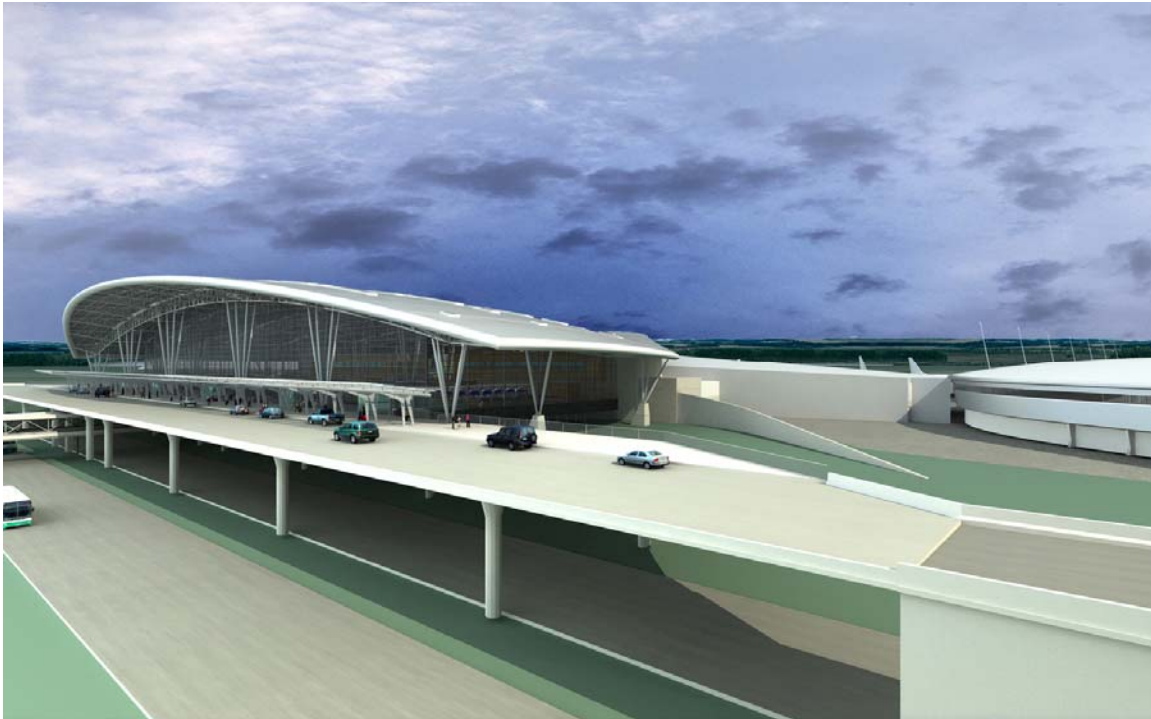
Indianapolis International Airport – The New Midfield Terminal

Introduction

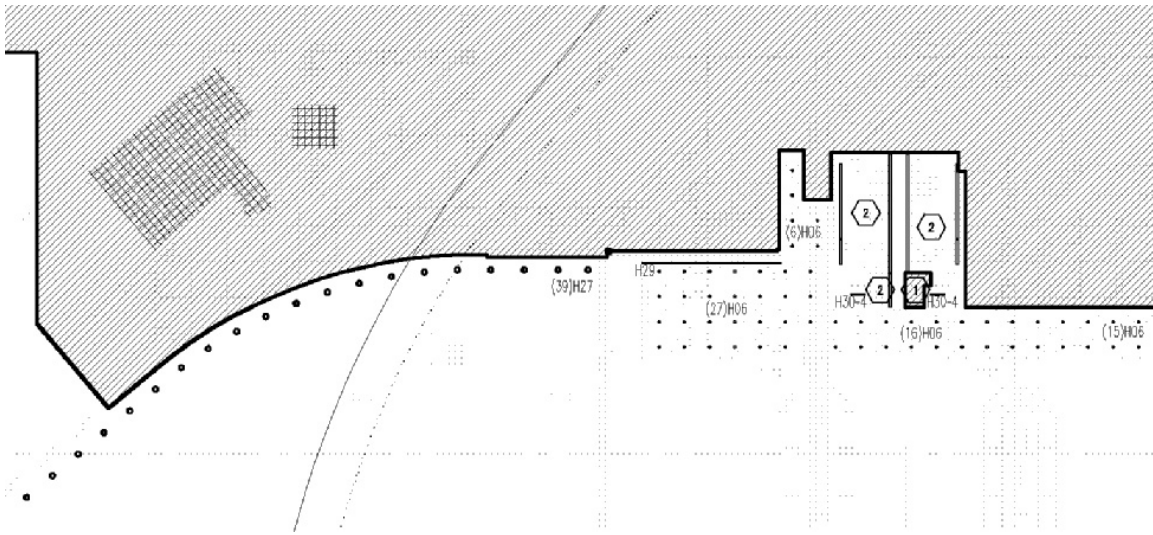
The space selection for the senior thesis on the Indianapolis International Airport – The New Midfield Terminal, will be based on a process: a passenger's experience from the moment he or she arrives, to the moment of departure. The spaces will be present in the path of which the passenger will walk through, from arrival of cars, to the departure of planes.

Spaces

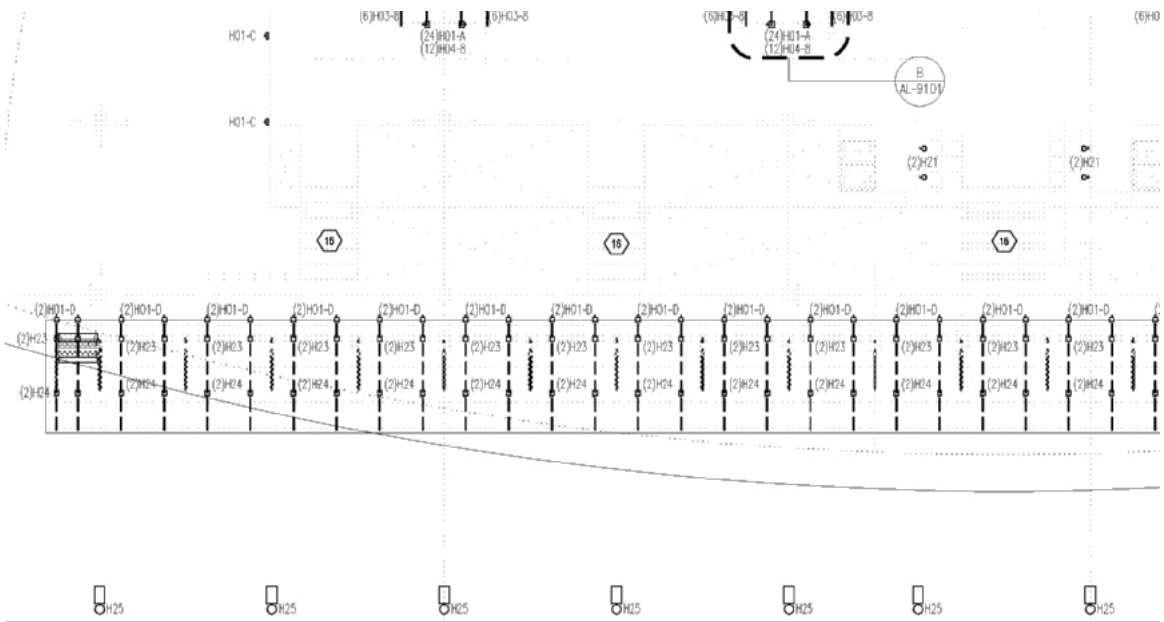
Exterior:



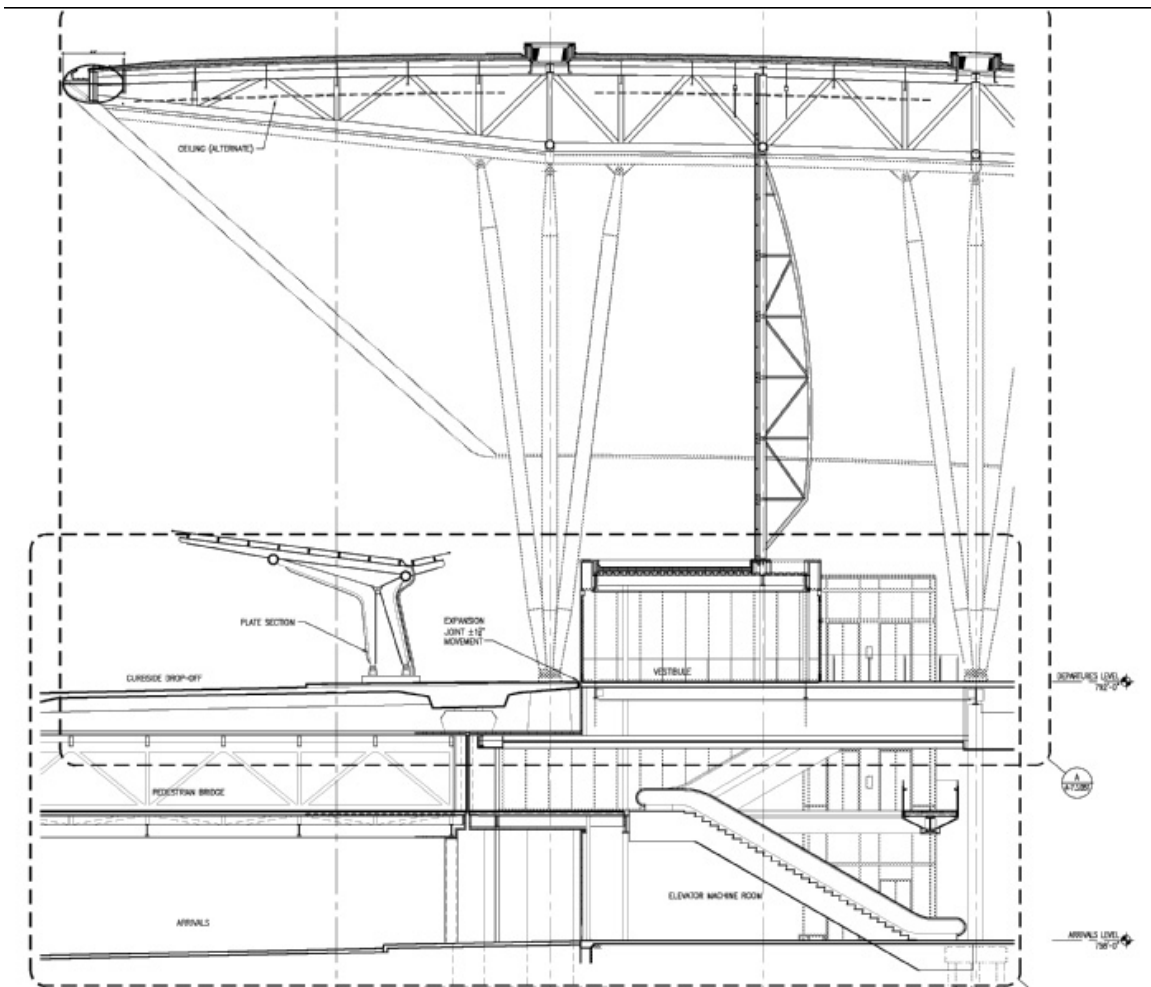
The powerful and compelling form of this airport's exterior structure invites users with a sense of flight and movement. In complying to the original design approach, new exterior lighting system will be redesigned to illuminate this skeleton like façade at night. Main activities associated with this outdoor space would be the quick drop off and pick up of passengers departing from or arriving at the airport. Certain sightseeing might also occur. Outdoor space spans approximately 280-320 feet.



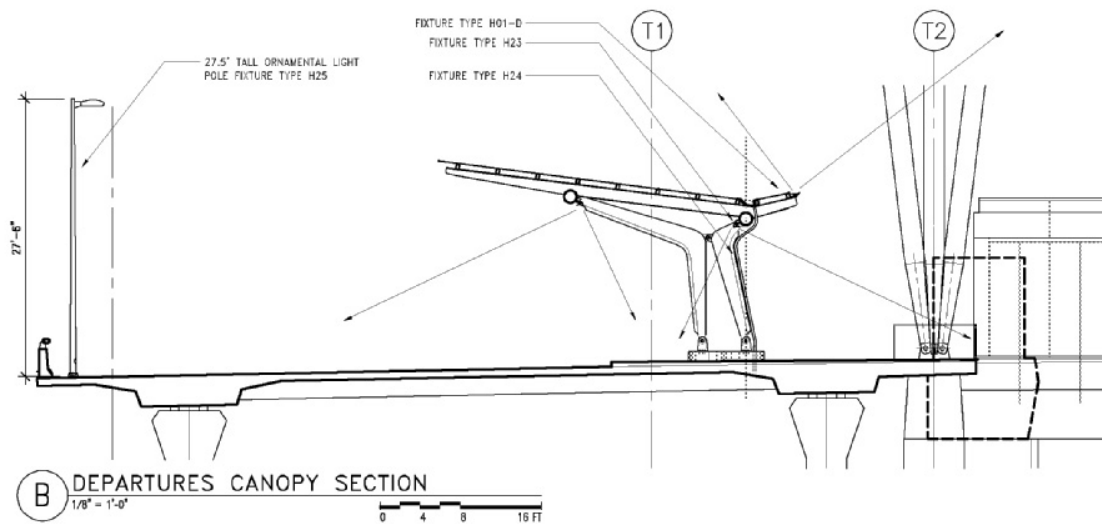
Exterior arrival roadway Plan



Exterior canopy Plan



Terminal section

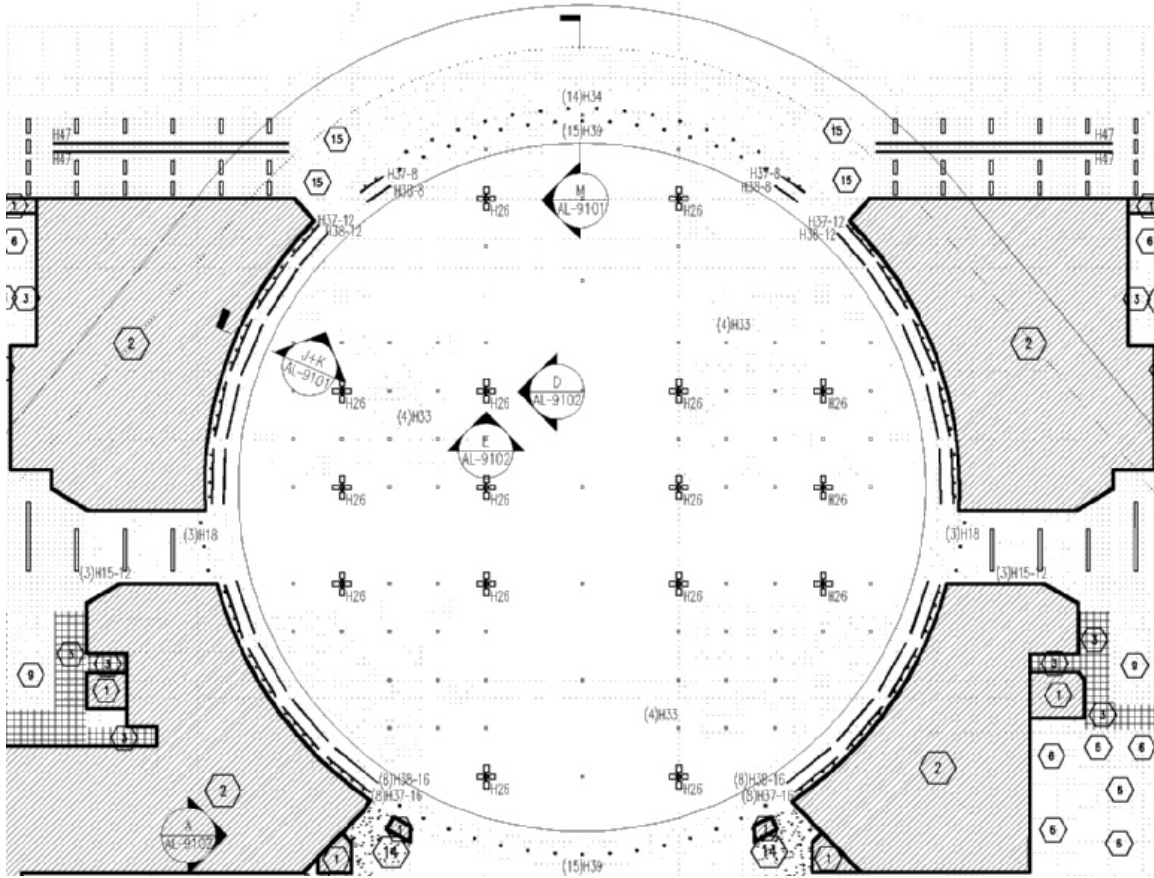


Departure canopy section

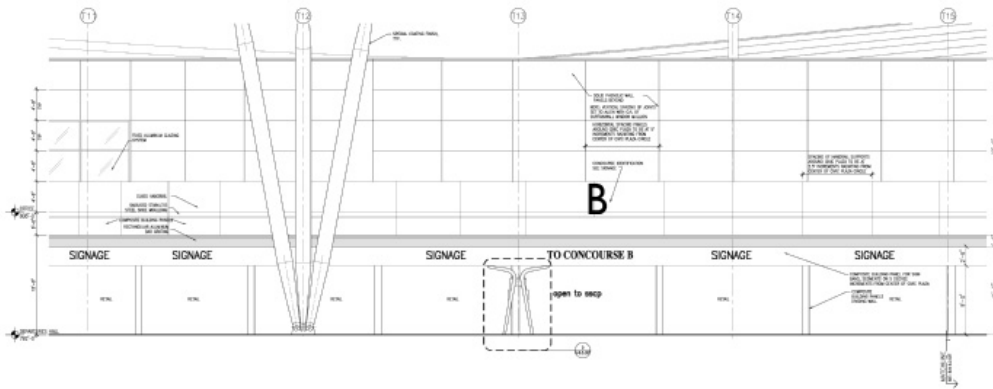
Civic Plaza:



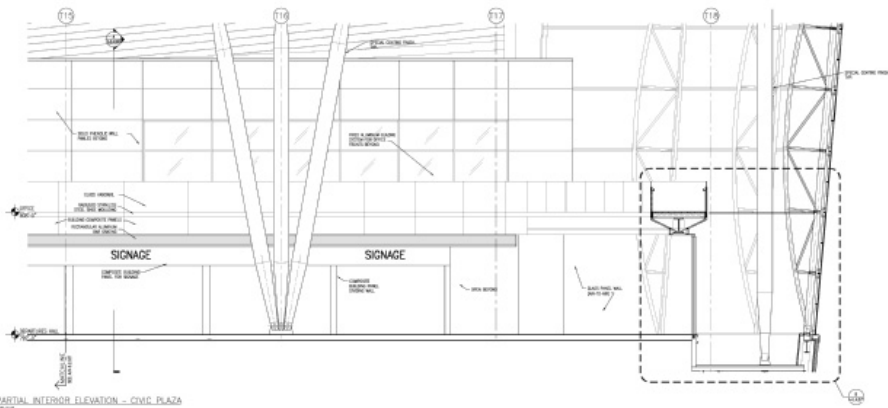
The heart of the new terminal, is this circular space – reminiscent of downtown’s Monument Circle – that will serve the functions of security, retail and food service. This great room will be a true civic space, with artwork and public events. Extensive daylight harvesting would be the main source of illumination throughout the daytime. The civic plaza has approximately 0.4 million square feet and approximately 400 feet in diameter.



Civic plaza



A PARTIAL INTERIOR ELEVATION - CIVIC PLAZA (FLAT PROJECTION)



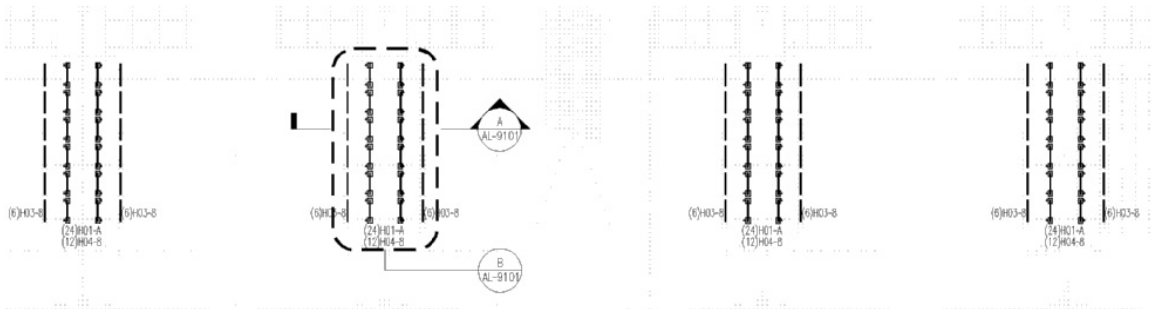
B PARTIAL INTERIOR ELEVATION - CIVIC PLAZA

Civic plaza interior elevation

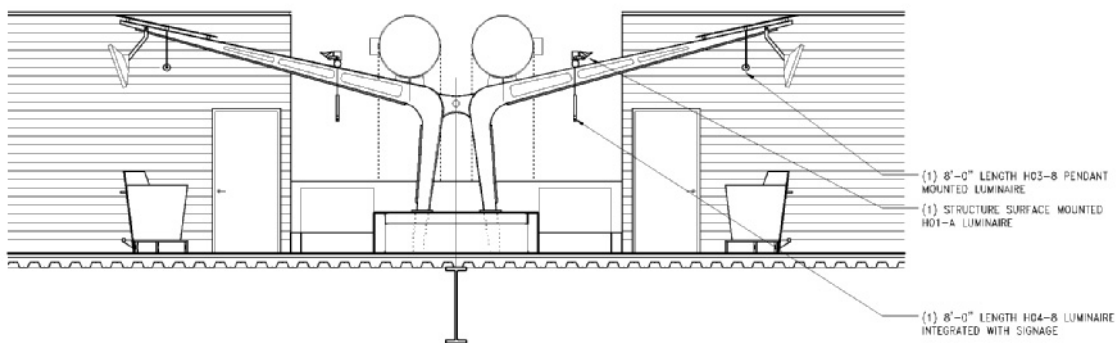


Passenger Check in Counter Hall

The main check-in area is where all passengers must bypass prior to transitioning into further spaces within this building. Heavy task lighting and near thousands of VDT displays are situated right here in this check in hall. The dimension of this space is approximately 300 feet by 200 feet.



Ticket hall



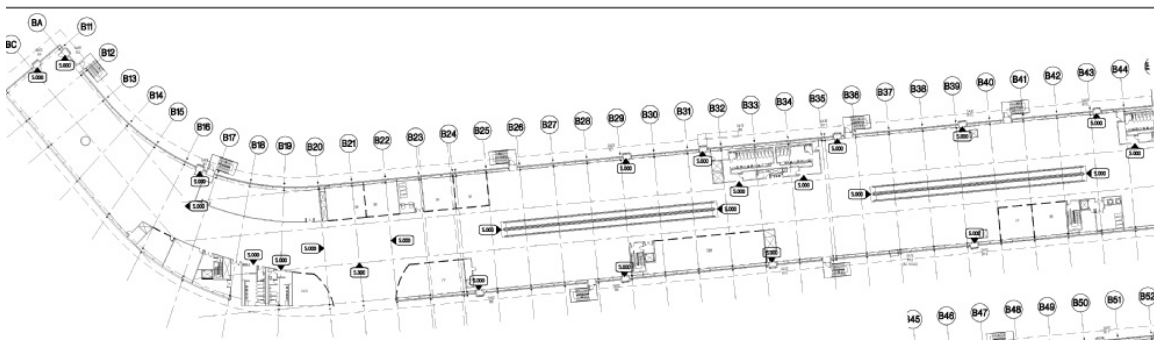
A TICKET CANOPY SECTION
 $\frac{1}{4}'' = 1'-0''$

Ticket canopy section

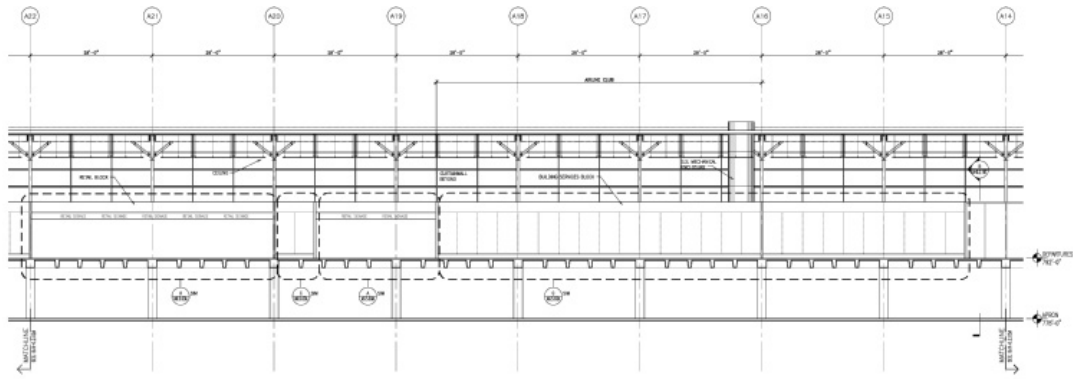
Passenger Concourse A or B



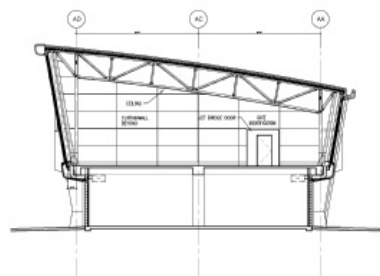
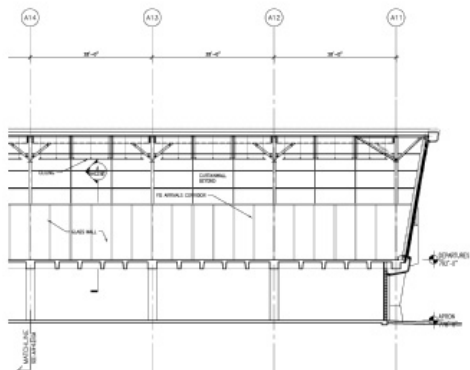
One of the two nearly identical passenger concourses that spans from the center terminal plaza, is in the shape of a rectangle with area of 200,000 square feet, spanning near 1000 feet long and 100 feet wide. The space will accommodate departing passengers while they await for flights as well as arriving passengers for traveling corridor. Reading, laptop usage, dining plus other various activities occurs within this space. Extensive daylighting usage are used to illuminate this concourse during day time.



Concourse A Plan



A PARTIAL INTERIOR ELEVATION



Concourse elevation